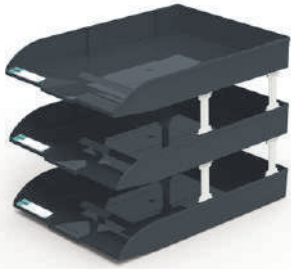




Documents & Parts Cabinet / Bin

Documents Tray



TOA-14

W260xD350xH265

3pcs / pack

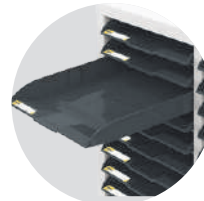
Documents Cabinet



PS material






Colored labels



Drawer stop design



	A4L	A4M	A4A
Model No.			
Outer dimensions	W257xD346xH78	W257xD346xH52	W260xD350xH50
Inner dimensions	W251xD327xH72	W251xD327xH46	W245xD320xH46
Material	PS	PS	ABS



A4L-104

W284xD348xH360

Drawer : A4L x4



A4A-106

W284xD348xH360

Drawer : A4A x6



A4L-204P

W586xD348xH380

Drawer : A4L x4



A4M-212

W586xD348xH380

Drawer : A4M x12



A4L-220

W596xD348xH880

Drawer : A4L x20



A4A-345

W880xD348xH880

Drawer : A4A x45



A4M-345

W880xD348xH880

Drawer : A4M x45



A4LM-32418

W880xD348xH1060

Drawer : A4L x24
A4M x18



A4A-345D

W940xD405xH945

Drawer : A4A x45
Handle with lock



A4L-330D

W940xD405xH945

Drawer : A4L x30
Handle with lock

Unit of measurement : mm

Parts Cabinet

TKI Parts Cabinet

TKI-1-2



Outer dimensions : W120xD240xH70
Inner dimensions : W114xD212xH65

Loading : 6kg

PS

TKI-1-3



Loading : 10kg

ABS

Each drawer includes one divider.
PS drawers are not suitable for oily items

TKI-2



Loading : 5kg

PS

TKI-2-3



Loading : 10kg

ABS

TKI-2-9



Loading : 10kg

PP (anti-static)

Surface resistance: 10⁴~10⁶ ohm

Outer dimensions : W100xD220xH52
Inner dimensions : W90xD192xH47

TKI-1



TKI-1308-2

W450xD242xH650

Drawer: TKI-1-2 x24



TKI-1412-3M

W605xD242xH1102

Drawer: TKI-1-3 x48
210kg load capacity



TKI-1412D-2

W645xD295xH1000

Drawer: TKI-1-2 x48
Handle with lock

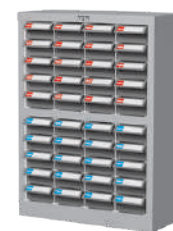
TKI-2



TKI-2405

W460xD230xH310

Drawer: TKI-2 x20



TKI-2410-3

W475xD230xH650

Drawer: TKI-2-3 x40



TKI-2515D-9M

W648xD295xH1105

Drawer: TKI-2-9 x75
Handle with lock
900kg load capacity

CEA/CEH Parts Cabinet

CEA



Outer dimensions : W164xD282xH76
Inner dimensions : W151xD253xH72

Loading : 10kg

PS + ABS

Each drawer includes one divider.



CEA-324

W600xD283xH720

Drawer: 24 pcs



CEA-330M

W605xD283xH952

Drawer: 30 pcs
210kg load capacity



CEA-330D

W640xD340xH925

Drawer: 30 pcs
Handle with lock

CEH



Outer dimensions : W120xD238xH70
Inner dimensions : W107xD213xH66

Loading : 10kg

PS + ABS

Each drawer includes one divider.



CEH-324

W450xD240xH650

Drawer: 24 pcs



CEH-448

W600xD240xH940

Drawer: 48 pcs



CEH-448DM

W648xD295xH1105

Drawer: 48 pcs
Handle with lock
900kg load capacity

Unit of measurement : mm

RB Parts Cabinet



RB-1016

Outer dimensions:W160xD450xH117
Inner dimensions:W120xD385xH98

Loading : 10kg

PS + PP

Each drawer includes one divider.



RB-530

W900xD500xH900

Drawer : 30 pcs



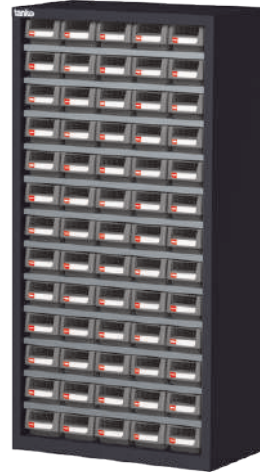
Mobile

RB-530M

W904xD505xH1046mm

Drawer : 30 pcs

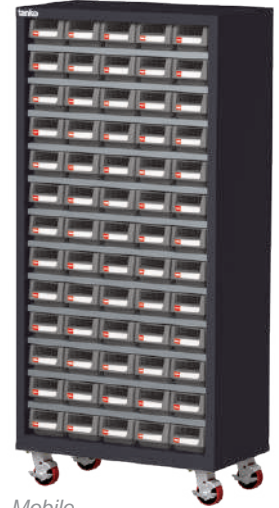
1000kg load capacity



RB-565

W900xD500xH1800

Drawer : 65 pcs



Mobile

RB-565M

W904xD505xH1946

Drawer : 65 pcs

1000kg load capacity

RA Parts Cabinet



RA-1016

Outer dimensions:W168xD415xH115
Inner dimensions:W146xD374xH95

Loading : 10kg

PS + ABS

Each drawer includes one divider.



RA-309

W560XD420xH468

Drawer : 9 pcs



RA-515

W900XD420xH468

Drawer : 15 pcs



RA-318

W560XD420xH880

Drawer : 18 pcs



RA-530

W900XD420xH880

Drawer : 30 pcs

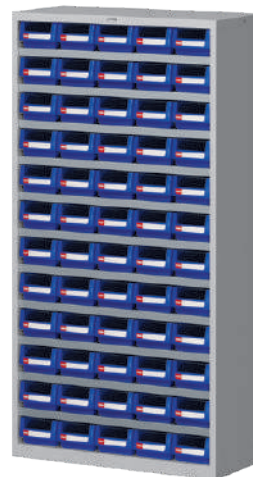
Mobile

RA-530M

W904XD424xH1026

Drawer : 30 pcs

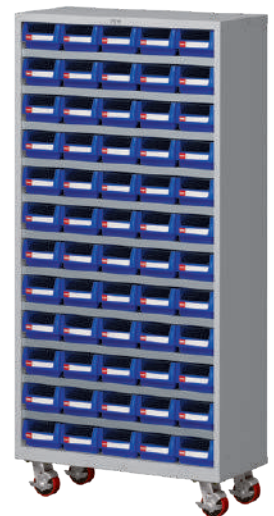
1000kg load capacity



RA-560

W900XD420xH1760

Drawer : 60 pcs



Mobile

RA-560M

W904xD420xH1906

Drawer : 60 pcs

1000kg load capacity

Tilt Out Bin / Team Case

Tilt Out Bin

 PATENTED



PC bins are suitable for oily items.
50° tilt out angle.



Can be applied to perforated boards with optional clips.



Bins are removable for easy access, refilling and cleaning.



L

TC-111

W300xD98xH113

Drawer : W274xD62xH70

Loading : 5kg

12 pcs / CTN
with colored labels



M

TC-112

W300xD98xH113

Drawer : W126xD62xH70

Loading : 3kg

12 pcs / CTN
with colored labels



S

TC-113

W300xD98xH113

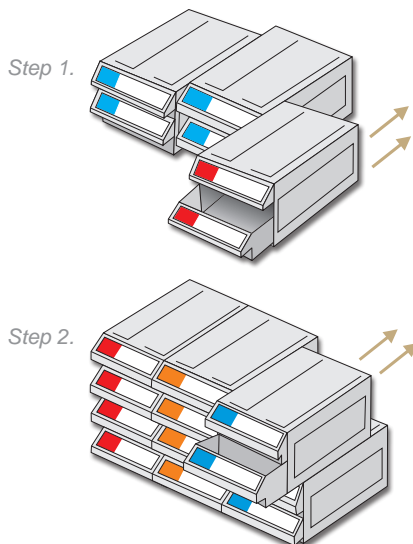
Drawer : W77xD62xH70

Loading : 2kg

12 pcs / CTN
with colored labels

Team Case

PS drawers are not suitable for oily items



TKI-301

W128xD195xH86

Drawer : W111xD168xH75

12 pcs / CTN
with colored labels

TKI-302

W128xD195xH86

Drawer : W111xD168xH35

12 pcs / CTN
with colored labels

TKI-304

W128xD195xH86

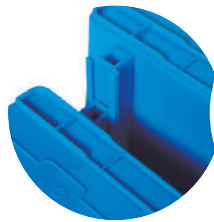
Drawer : W50xD168xH35

12 pcs / CTN
with colored labels

Team Bin / Hanging Bin

TA Team Bin

 PATENTED



Side link slots



Supporting poles



Colored labels



Hanger function



Model No.	TA-112	TA-115	TA-120	TA-154	TA-155
Outer dimensions	W123xD180xH77	W153xD250xH127	W203xD350xH157	W203xD450xH180	W303xD450xH180
Inner dimensions	W94xD133xH69	W119xD191xH119	W153xD276xH149	W148xD367xH172	W248xD367xH172
Loading	3kg (hanger) / 15kg	5kg (hanger) / 20kg	30kg	30kg	50kg
Items included	Supporting poles, labels				
Color	● ●				
Qty	50 pcs / CTN	36 pcs / CTN	18 pcs / CTN	12 pcs / CTN	8 pcs / CTN
Note	Has hanger function		—	Can be assembled with TA-155	Can be assembled with TA-154

TKI Hanging Bin



Model No.	TKI-8301	TKI-8302	TKI-8303	TKI-8304	TKI-8305
Outer dimensions	W105xD110xH50	W105xD140xH75	W105xD190xH75	W140xD220xH124	W140xD270xH125
Inner dimensions	W86xD78xH45	W86xD100xH70	W86xD150xH70	W115xD151xH118	W115xD201xH118
Loading	3kg	4kg	4kg	10kg	10kg
Items included	Labels				
Color	● ● ●	● ● ● ●	● ● ●	● ● ● ●	● ● ●
Qty	24 pcs / CTN	24 pcs / CTN	24 pcs / CTN	12 pcs / CTN	12 pcs / CTN

Has hanger function. ● Black : PP (anti-static)

Unit of measurement : mm